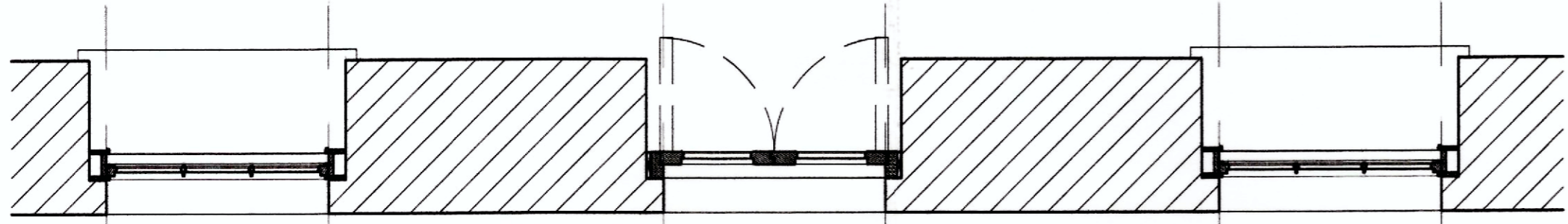
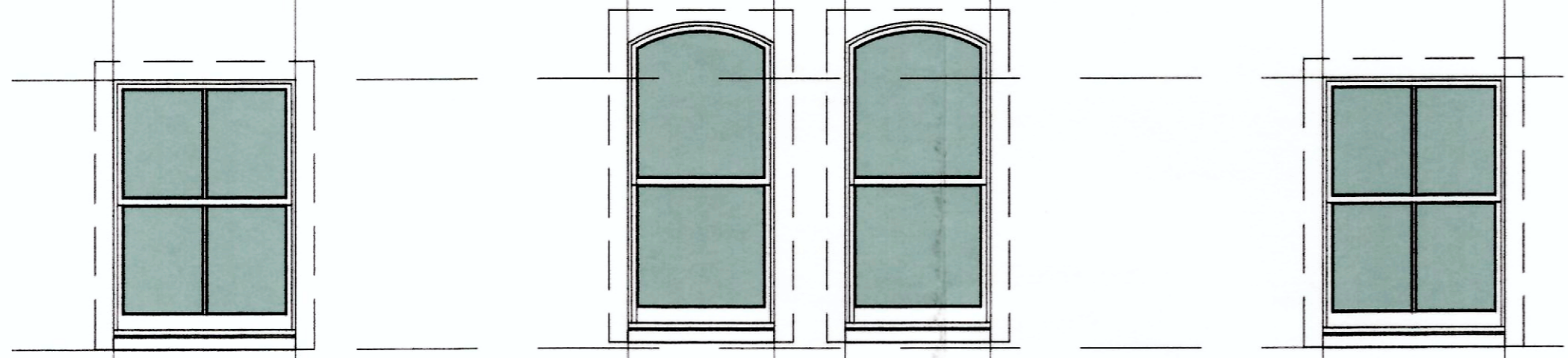
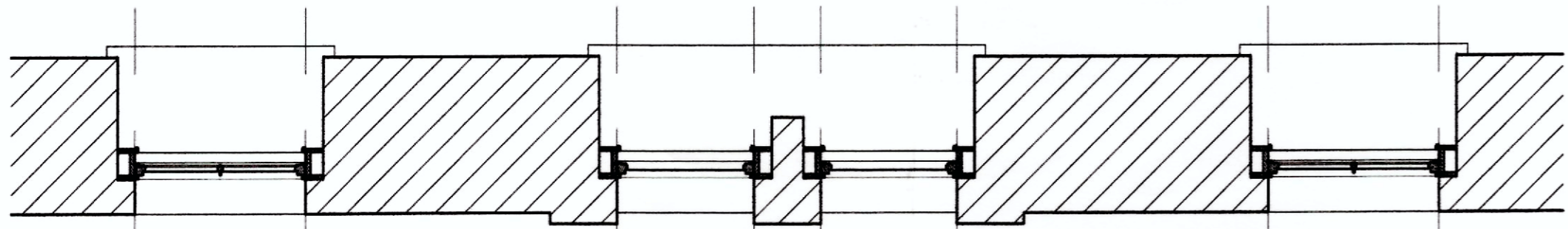
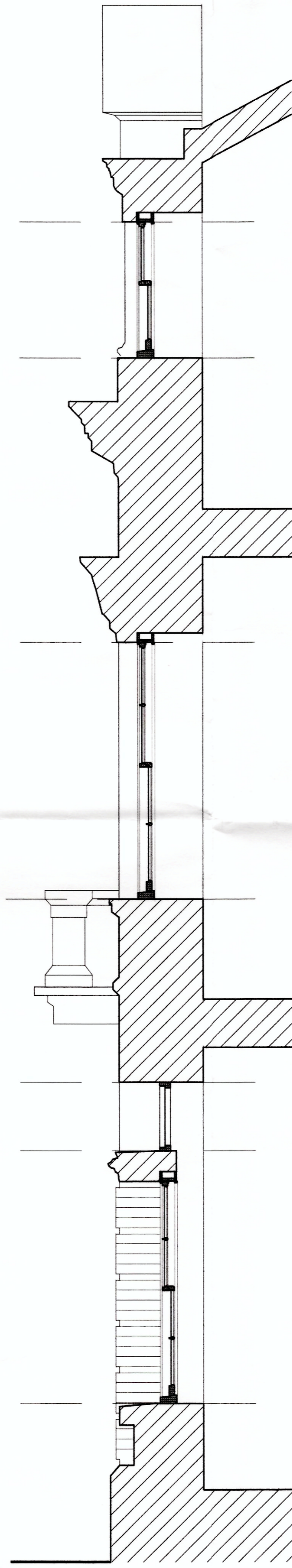
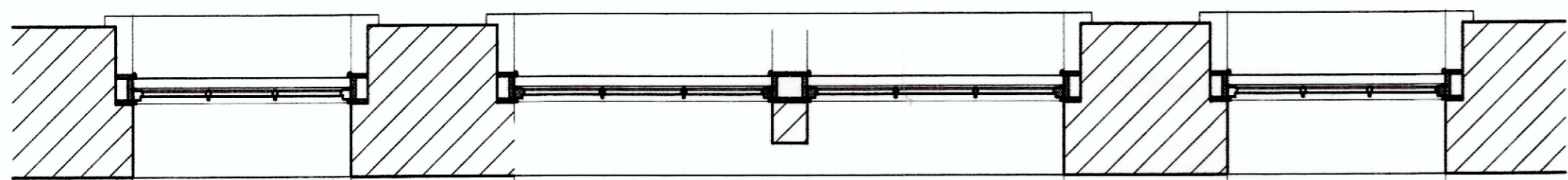


WINDOW GROUP 3



WINDOW GROUP 2

WINDOW GROUP 1

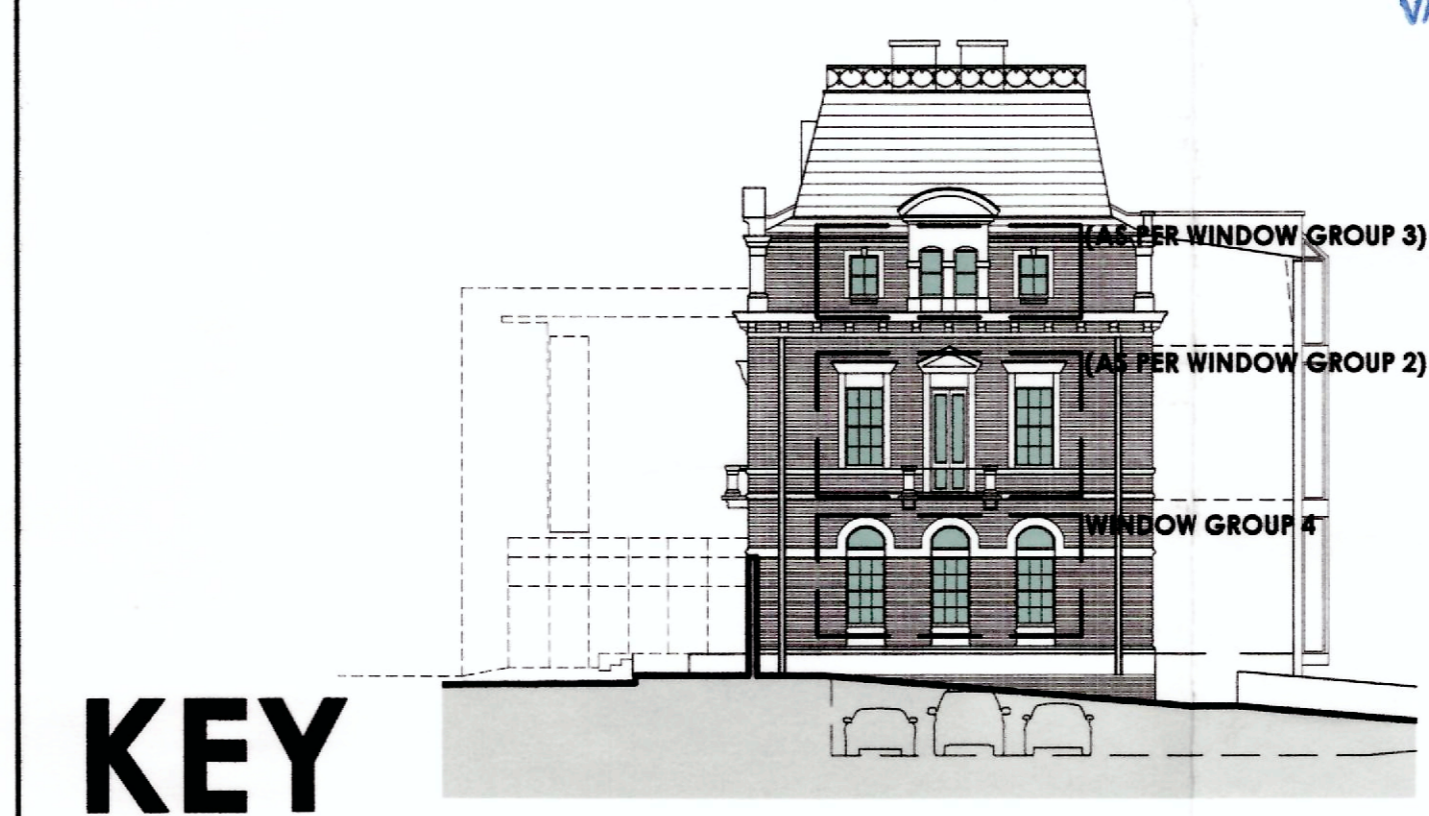
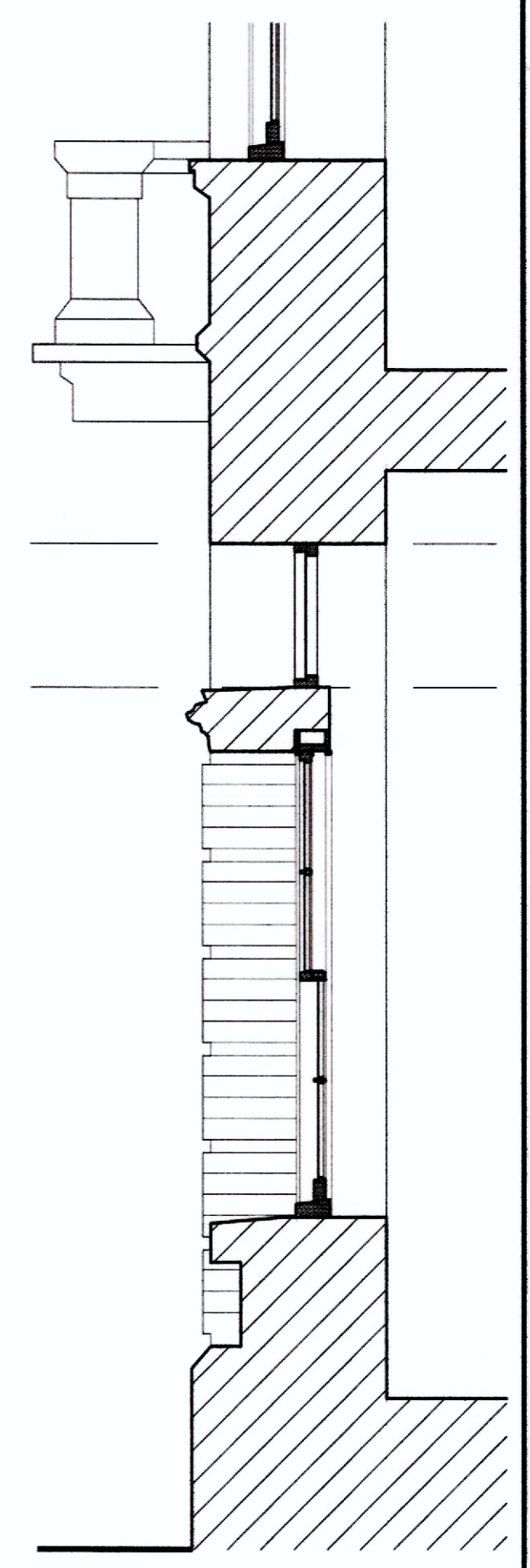
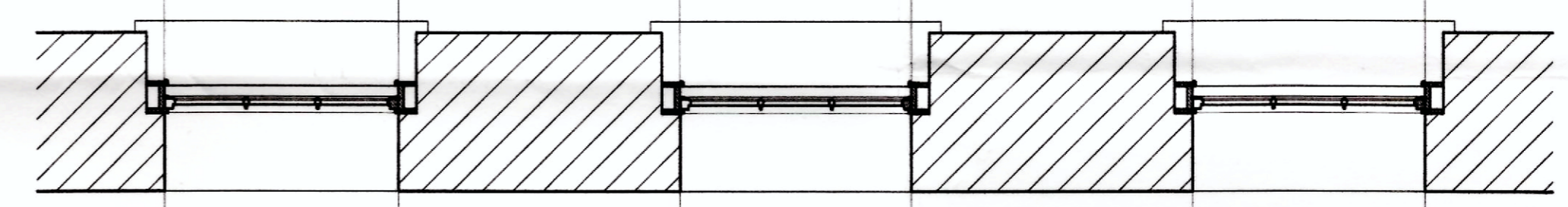
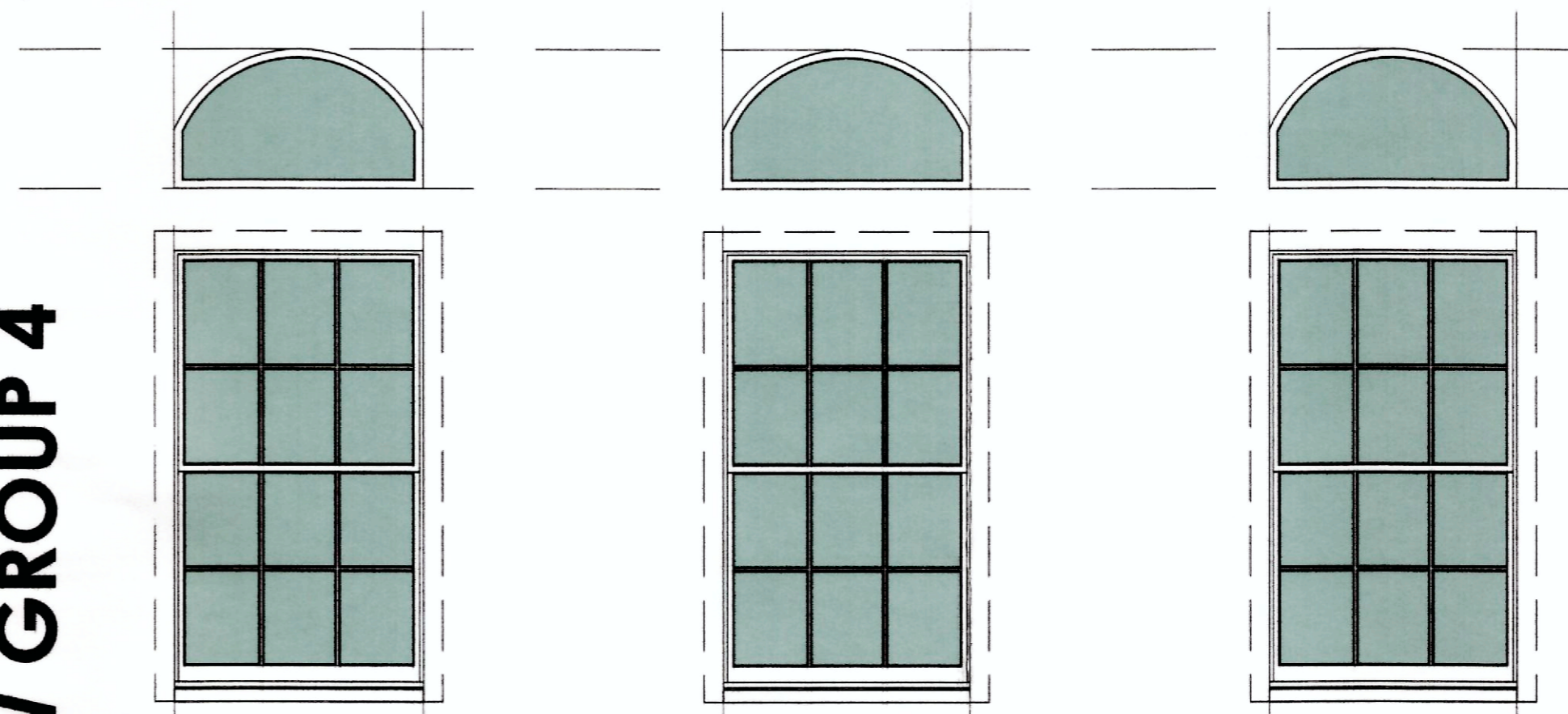


- BOX SASH WINDOWS**
- Windows fabricated in responsibly sourced Sapele Hardwood all single glazed in 4mm toughened clear glass
 - Box components;
 - Inner casing 76 x 19
 - Outer casing 95 x 19
 - Box stile 119 x 28
 - Parting bead 19 x 6
 - Stop bead 19 x 16
 - Sash components;
 - Mid rails 35 high
 - Bars 25 high
 - Sash stile 45 high
 - Sash bottom rail 89 high
 - Parting bead 19 x 6
 - Stop bead 19 x 16



- ARCHED HEAD FIXED FANLIGHTS AND 'FRENCH' DOORS**
- All fabricated in responsibly sourced Sapele Hardwood all single glazed in 4mm toughened clear glass
 - Fanlights - timber section size 95 x 45
 - Doors - timber section size Top and mid rails, and stiles 95 x 57 Bottom rails 240 x 57

WINDOW GROUP 4



KEY

VALE OF GLAMORGAN COUNCIL
(PLANNING DIVISION)
22 NOV 2011
DATE OF REGISTRATION
1101178 LBC

RECEIVED
22 NOV 2011
ENVIRONMENTAL AND ECONOMIC

PROJECT PROPOSED HOTEL AND CAFE BAR MARINE BUILDINGS, PENARTH		CLIENT SKYASSET LTD	
TITLE PROPOSED WINDOWS AND DOORS		ARCHITECT NIGEL ARNOLD	
DRAWN NA	DATE 09/11	SCALE 1:100	DRWG No. 37311:26
This drawing is copyright. Scaled dimensions may be used for approximation. Ensure only dimensions are used for construction.			