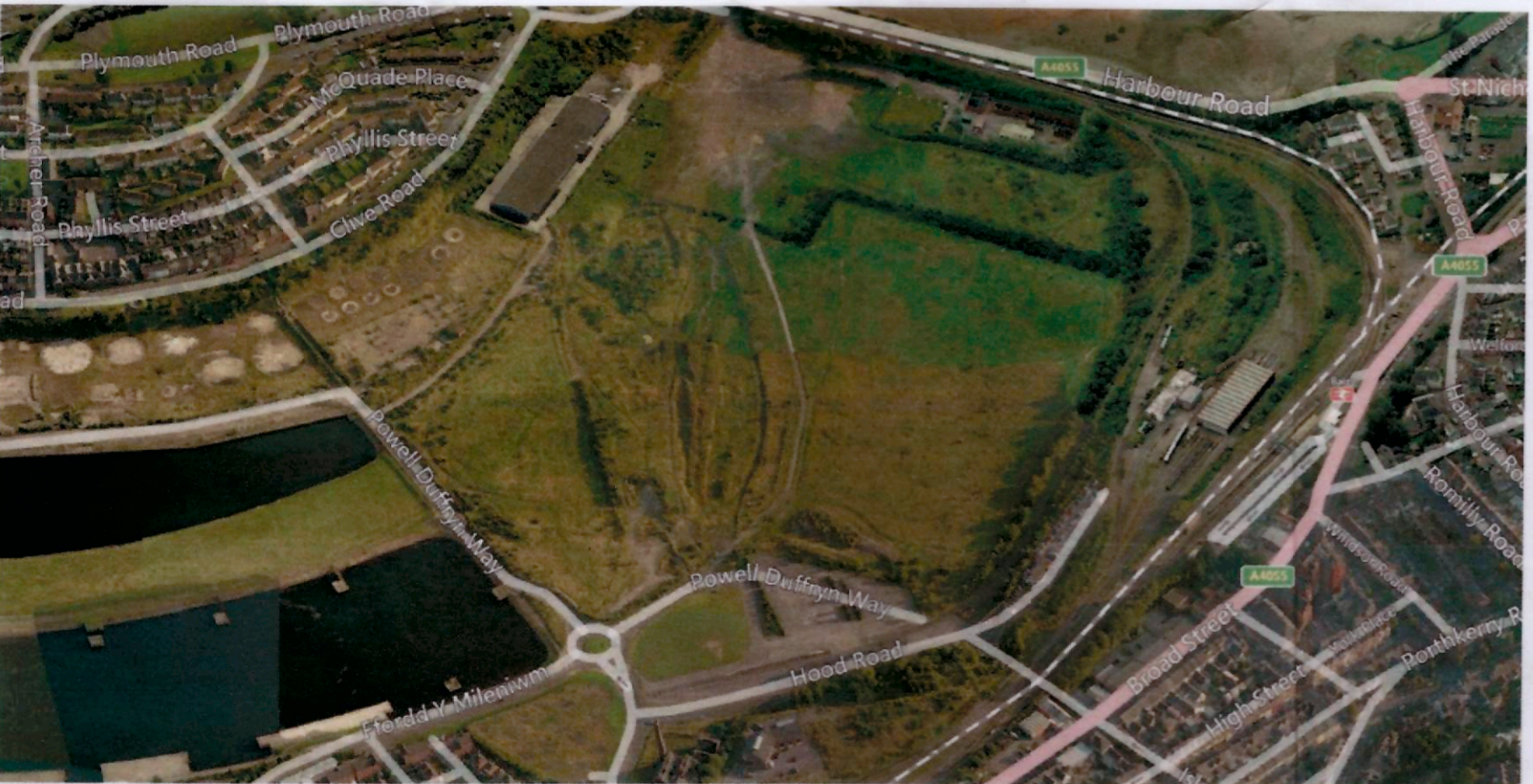


Aerial view looking North



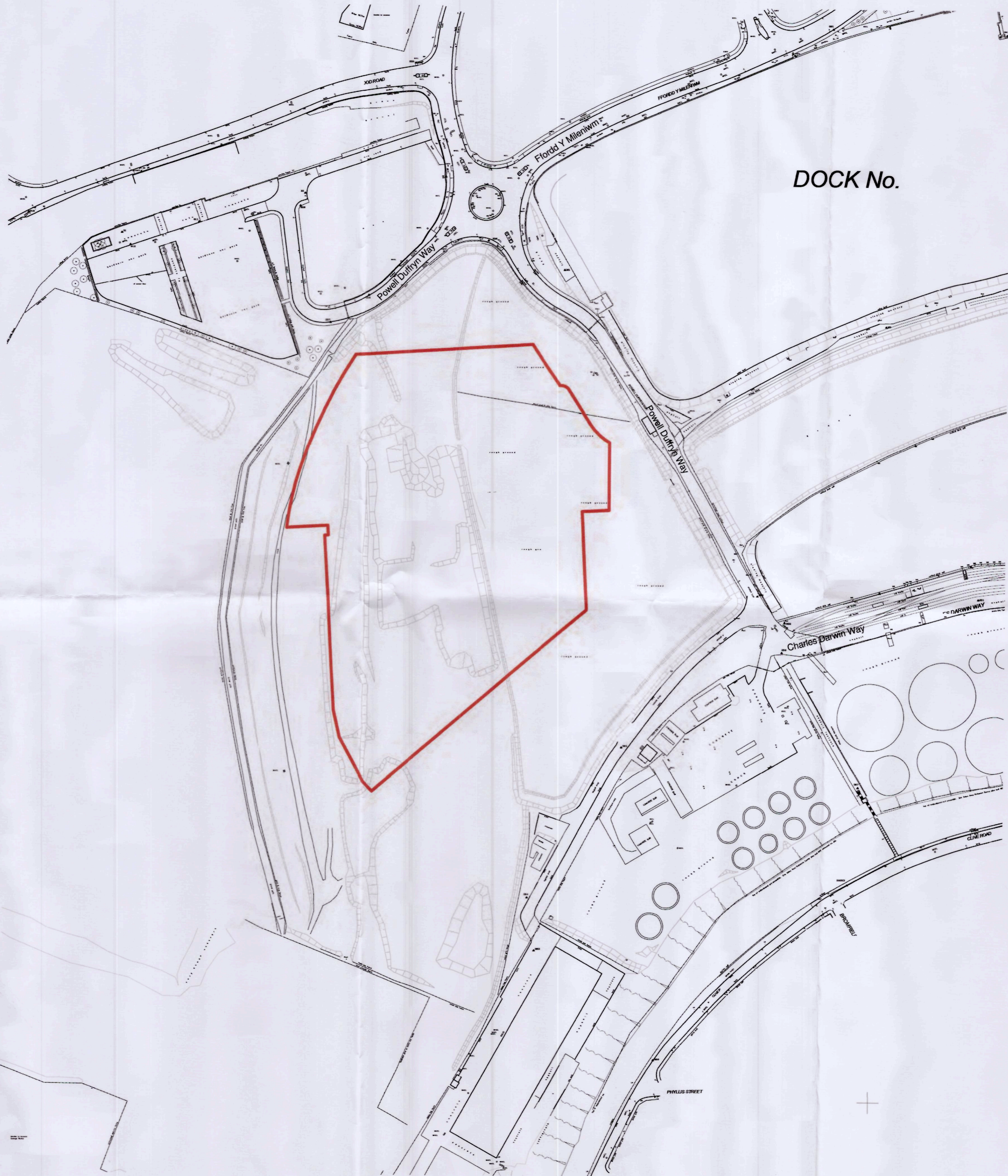
Aerial view looking East



Aerial view looking South



Aerial view looking West



1 Site Location Plan
1 : 1250

DOCK No.

© WCEC ARCHITECTS - DISCLAIMER
 This drawing is copyright and shall not be reproduced or used for any other purpose without the written permission of the Architects.
 This drawing must be read in conjunction with all other related drawings and documentation.
 It is the contractors responsibility to ensure full compliance with the Building Regulations.
 Do not scale from this drawing, use figured dimensions only.
 It is the contractors responsibility to check and verify all dimensions on site.
 Any discrepancies to be reported immediately.
 IF IN DOUBT ASK.
 Materials not in conformity with relevant British or European Standards/Codes of practice or materials known to be deleterious to health & safety must not be used or specified on this project.
 Materials known to contain asbestos contaminated materials (ACM's) in the manufacture or installation process have not been specified and must not be used on this project.

KEY:
 ASDA Site Boundary

E	15.07.14	Site topo incorporated.	GN	RB
D	15/08/12	ISSUED FOR PLANNING	EB	DPB
C	13/08/12	Drawing issued to the Developers	EB	DPB
B	26/07/12	General Update	EB	DPB
A	20/07/12	Site masterplan added	EB	DPB
No	Date	Description	By	Ckd



CLIENT
ASDA
 SUPERMARKETS

PROJECT
**PROPOSED ASDA STORE
 POWELL DUFFRYN WAY,
 BARRY**

TITLE
Site Location Plan

DRAWING STATUS
Planning

DRAWN	RSF	CHECKED	AJD
SCALE	As indicated @ A1		
DATE	02/07/12		

WCEC architects
 Carrwood Court, Carrwood Road
 Sheepbridge, Chesterfield, S41 9QB

t: 01246 260261, e: email@wcec.co.uk, www.wcec.co.uk

JOB NO.	DRAWING NO.	REV
12.112	PL-01	E

