

- 7 Lavandula Hidcote
- 7 Vinca minor Elegans (I)
- 1 Pyracantha rogersiana (I)
- 3 Choisya Sundance
- 8 Hebe racklanensis
- 6 Rosemarinus officinalis (3/Slide,E)
- 3 Viburnum Eve Price (I)
- 32 Loronicera Malmgren (M)

- 3 Hydrangea Black Stem Zambie (I)
- 6 Bergenia cordifolia (E,I)
- 9 Lavandula Hidcote (M)
- 2 Jasminum officinale (d)
- 6 Sarcococca confusa (E, 3/Sp)
- 10 Corylus avellana (D,3/Sp)
- 10 Crataegus monogyna
- 28 Acer campestre
- 20 Cornus sanguinea
- 15 Hebe racklanensis
- 16 Ilex aquifolium (3/Sp,O)
- 25 Ligustrum vulgare

- 12 Pittosporum gairdneri (H,F)
- 69 Escallonia Red Hedger (S)
- 12 Ligustrum oval Aunum (F,H)
- 24 Mahonia Apollo
- 20 Hypericum Hidcote
- 24 Hedera Glacier (end,M)
- 24 Prunus Otto Luyken (end,I)

- 9 Loronicera Winter Beauty
- 9 Choisya ternata (U)
- 6 Sarcococca confusa (E) (3/Sp)
- 24 Euonymus Emerald & Gold (M)
- 12 Escallonia Red Hedger (H)
- 2 Pyracantha rogersiana (d)
- 6 Skimmia japonica (O,3/Sp)
- 12 Hypericum Hidcote (I)
- 9 Mahonia Apollo (M)
- 3 Viburnum Eve Price (O)
- 7 Cornus alba Sibirica
- 3 Skimmia japonica
- 3 Loronicera Winter Beauty (O,end)

- 12 Choisya ternata
- 12 Vinca Englemanni (M)
- 12 Caenothus Repens
- 12 Berberis thun Aro Nana
- 10 Pyracantha rogersiana (W@2M c/s)
- 30 Hebe racklanensis
- 8 Potentilla Elizabeth (F,I)
- 9 Rosemarinus officinalis (FM)
- 3 Choisya Silver Pink (E,I)

- 9 Cornus Winter Sun (I)
- 24 Prunus Otto Luyken (I)
- 24 Hedera Glacier (M)
- 16 Potentilla Elizabeth
- 7 Euonymus E&G (M)
- 9 Potentilla Elizabeth (U)
- 21 Escallonia Red Hedger (H)
- 3 Spiraea Firelight
- 12 Hebe Red Edge
- 2 Rosemarinus officinalis (E)

- 12 Choisya ternata
- 25 Acer campestre
- 25 Crataegus monogyna
- 25 Corylus avellana
- 10 Cornus sanguinea
- 10 Ligustrum vulgare
- 6 Ilex aquifolium (O,3/Sp)

- 21 Escallonia Red Hedger (S)
- 6 Potentilla Elizabeth (Front)
- 25 Hebe racklanensis
- 10 Rosemarinus officinalis (E, E/Slide)
- 3 Austrobaileya (O)
- 24 Erioseba abbotii (H,W)
- 1 Philadelphus Aurum (O)

- 8 Box balls (3/Slide)
- 12 Bergenia cordifolia (E/Slide)
- 12 Escallonia Red Hedger (H)
- 45 Lavandula Hidcote (H,5/Slide,M)
- 8 Hebe angustifolia (3/Slide)
- 6 Rosemarinus officinalis (3/Slide)
- 6 Choisya ternata (3/Slide)
- 2 Pittosporum gairdneri (1/Slide,E) in
- 6 Caenothus Repens (3/Slide)

- 3 Sarcococca confusa (M)
- 1 Viburnum judii (E)
- 2 Pyracantha rogersiana (d)
- 4 Euonymus E & G (U)
- 2 Box balls (E) in
- 10 Bergenia cordifolia (3/Slide)
- 7 Choisya ternata (3/Slide)
- 2 Pyracantha rogersiana (H)
- 4 Euonymus E & G (U)

- 15 Escallonia Red Hedger (H)
- 15 Caenothus Repens
- 1 Pittosporum Tiny Tim in
- 5 Euphorbia robbiae
- 5 Berberis thun Aro Nana (O)
- 2 Pyracantha rogersiana (d)
- 10 Rosemarinus officinalis (E)
- 30 Hebe racklanensis
- 7 Caenothus Repens (3/Slide)

LANDSCAPING LEGEND

- EXISTING TREES TO BE RETAINED
- EXISTING TREE TO BE REMOVED
- EXISTING TREE ROOT PROTECTION AREA
- TPO TREE
- PROPOSED TREE / SPECIMEN SHRUB
- SHRUB BED / IMPACT PLANT
- PROPOSED HEDGE
- ORNAMENTAL CLIMBER
- TURF - FRONT GARDENS, CLOSE MOWN
- REAR GARDEN - ROTOVATE AND LEVEL
- COMMUNAL AREAS WILDFLOWER GRASS SEED
- COMMUNAL AREAS WILDFLOWER GRASS SEED
- GRAVEL - Golden knapped flint

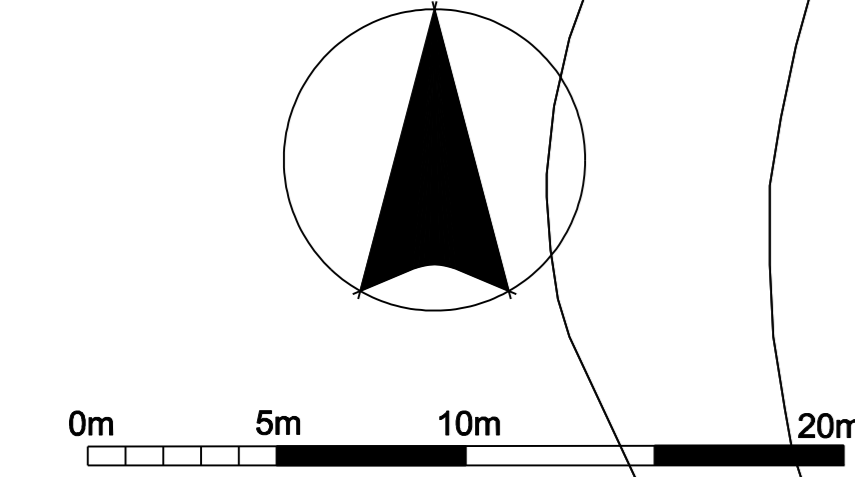
NOTES

Refer to Architects/Engineers drawing for details of levels, buildings, hard surfaces, retaining structures, visibility splay, services and fences.

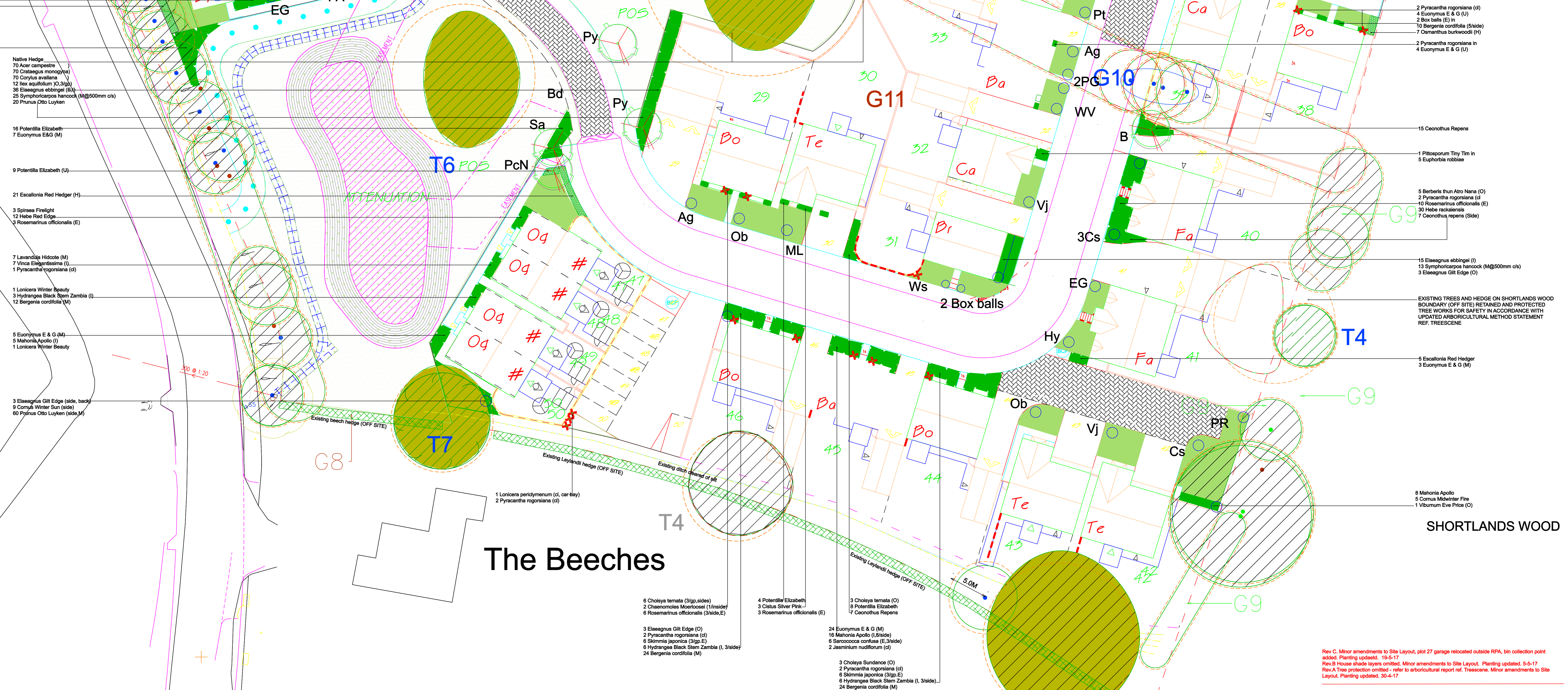
Building foundations with regard to trees to be in accordance with the NBS Guidelines Chapter 4.2.

Refer to Arboricultural Tree Survey Report for details of existing trees, tree works and protection measures.

All tree surgery carried out in accordance with BS3998:2010 Tree Works



The Beeches



Rev C: Minor amendments to Site Layout, plot 27 garage relocated outside RPA, bin collection point added. Planting updated. 15-5-17

Rev B: House shade layers omitted. Minor amendments to Site Layout. Planting updated. 5-5-17

Rev A: Tree protection omitted - refer to arboricultural report ref. Treescene. Minor amendments to Site Layout. Planting updated. 30-4-17

All setting out dimensions to be site confirmed prior to works commencing and any discrepancies confirmed to architect. This drawing is to be read in conjunction with all other architectural and structural engineers drawings.

PROPOSED RESIDENTIAL DEVELOPMENT
 LAND OFF CARDIFF ROAD, DINAS POWYS for
 EDENSTONE LTD

TREE CONSTRAINTS AND LANDSCAPE PROPOSALS
 PLANNING SHEET 1 OF 2 1:200 (AO)

M. D. LANDSCAPE ARCHITECTS
 3 HANOVER TERRACE, BATH BA1 8LJ
 E-MAIL: mdd@mda-land.co.uk

Date: 3/3/17 Drawn: MDD Checked: Drawing No: 994/PA/01C