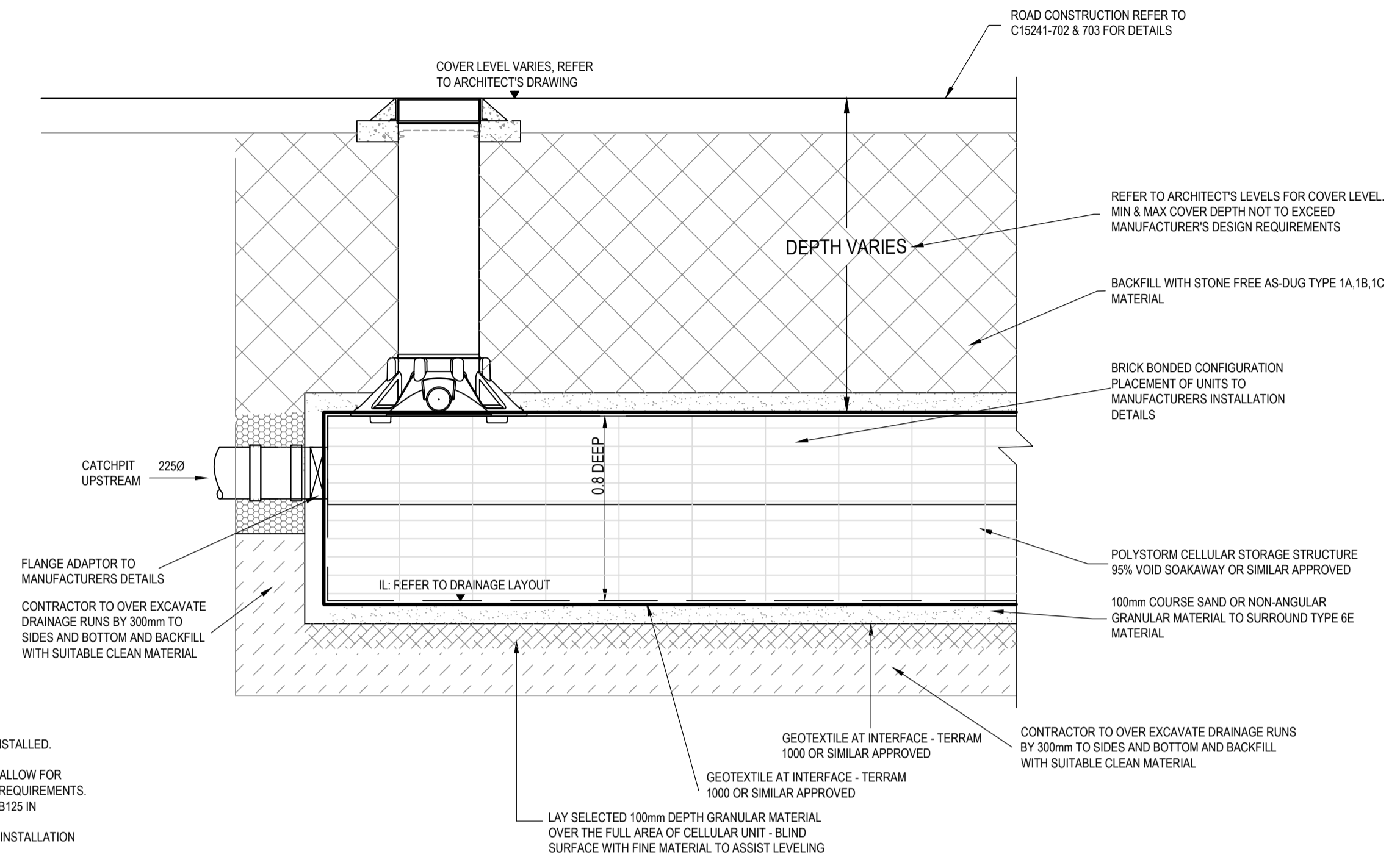


**100YR OFFLINE GEO-CELLULAR STORAGE  
DETAIL  
(VOLUME 12m<sup>3</sup>)  
SCALE 1:20**

- NOTE:
1. SURFACE LOAD SPECIFICATION TO DETERMINE TYPE OF CELLULAR SYSTEM TO BE INSTALLED.
  2. CONFIGURATION TO SUIT PLAN LAYOUT DRG. No C15241-500
  3. INSPECTION POINTS TO BE PROVIDED IN CONJUNCTION WITH ACCESSIBLE UNITS TO ALLOW FOR INSPECTION AND MAINTENANCE OF STORAGE TANK IN LINE WITH MANUFACTURER'S REQUIREMENTS.
  4. INSPECTION COVERS TO BE LOAD CLASSIFICATION D400 IN TRAFFICKED AREAS AND B125 IN LANDSCAPED AREAS.
  5. GEOTEXTILE AND GEOMEMBRANE TO BE INSTALLED IN LINE WITH MANUFACTURER'S INSTALLATION GUIDANCE, AND THE GEO-CELLULAR STORAGE MANUFACTURER'S REQUIREMENTS.



**TYPICAL 100YR GEO-CELLULAR SOAKAWAY DETAIL  
SCALE 1:20**

Rev	Date	Description	By	Apvd
C1	10.10.16	FIRST ISSUE	SJ	CP

Project  
**BRYN EITHIN  
DINAS POWYS**

Title  
**DRAINAGE CONSTRUCTION DETAILS  
SHEET 4**

Client  
**PORTABELLA**

Scale @ A1  
**AS SHOWN**

Project Ref	Drawing No	Rev
<b>C15241</b>	<b>508</b>	<b>C1</b>

REVISION REFERENCING  
P = Preliminary A = Approval T = Tender C = Construction

