


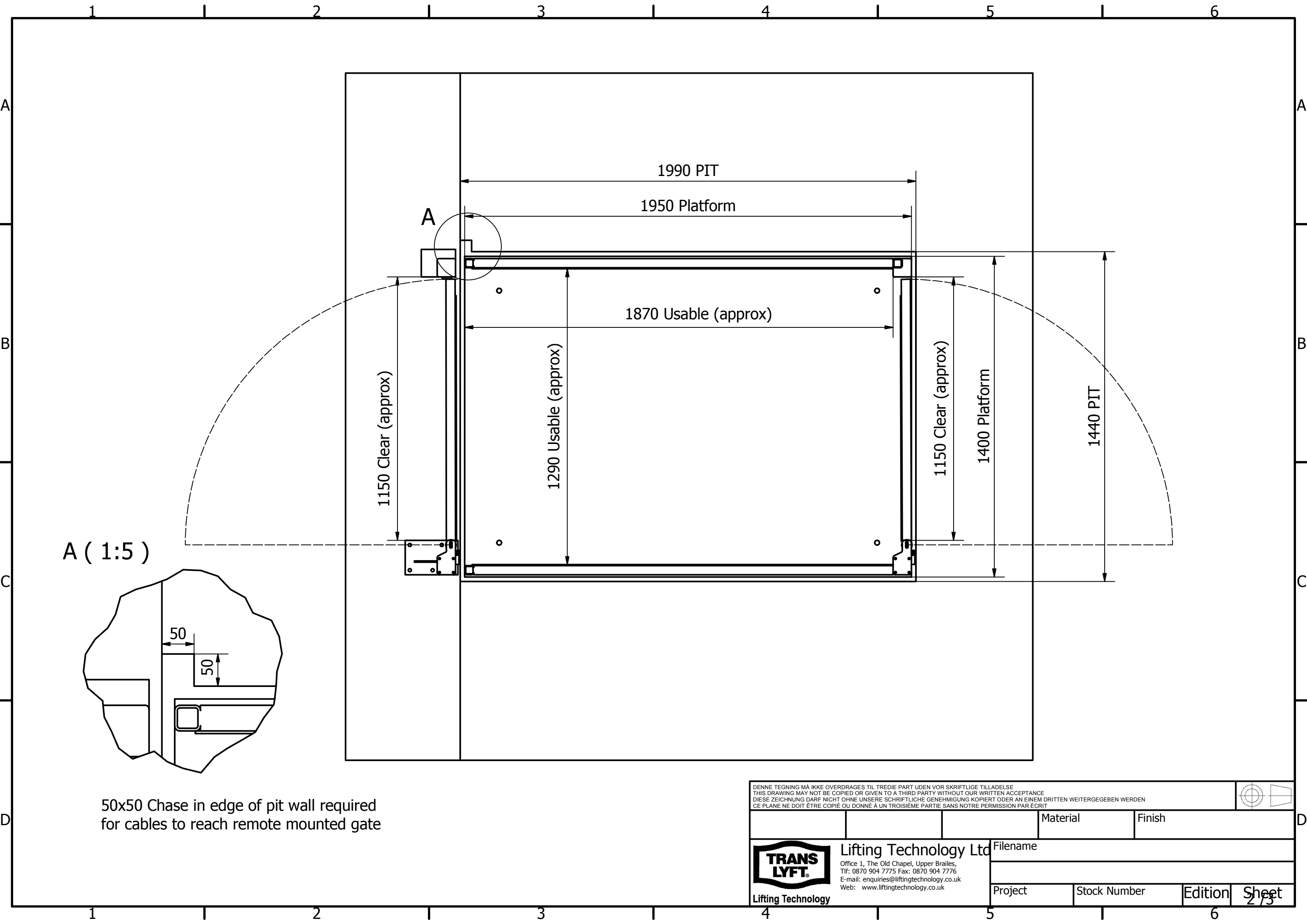
**PIT INFORMATION:**

1. If the power pack is sited outside the pit, a 100mm min duct/Chase is required for the hose and cables, this must have a smooth finish inside and bends to be a min. radius of 150mm and fitted with a draw wire.
2. Where upper/mid level gates or barriers arms are remote mounted, additional wiring tubes or cutouts for conduits will be required; so as the interlock cables can be protected.
3. The pit must be fitted with an adequate sized drain or a pump with a float switch if there is a risk of water entering the pit.
4. It is recommended that the pit edge be reinforced with a kerb angle (60x60x6 or similar) to prevent the edge of the pit from being damage during use.

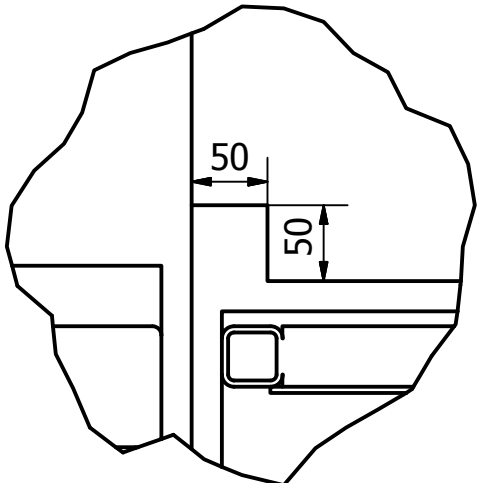
DENNE TEGNING MÅ IKKE OVERDRAGES TIL TREDJE PART UDEN VOR SKRIFTLIGE TILLAESELSE  
 THIS DRAWING MAY NOT BE COPIED OR GIVEN TO A THIRD PARTY WITHOUT OUR WRITTEN ACCEPTANCE  
 DIESE ZEICHNUNG DARF NICHT OHNE UNSERE SCHRIFTLICHE GENEHMIGUNG KOPIERT ODER AN EINEM DRITTEN WEITERGEGEBEN WERDEN  
 CE PLANE NE DOIT ÊTRE COPIÉ OU DONNÉ À UN TROISIÈME PARTIE SANS NOTRE PERMISSION PAR ÉCRIT

		Material	Finish
 <b>Lifting Technology Ltd</b> <small>Office 1, The Old Chapel, Upper Brailles,          Tlf: 0870 904 7775 Fax: 0870 904 7776          E-mail: enquiries@liftingtechnology.co.uk          Web: www.liftingtechnology.co.uk</small>		Filename	
Project	Stock Number	Edition	Sheet

1/3




A ( 1:5 )

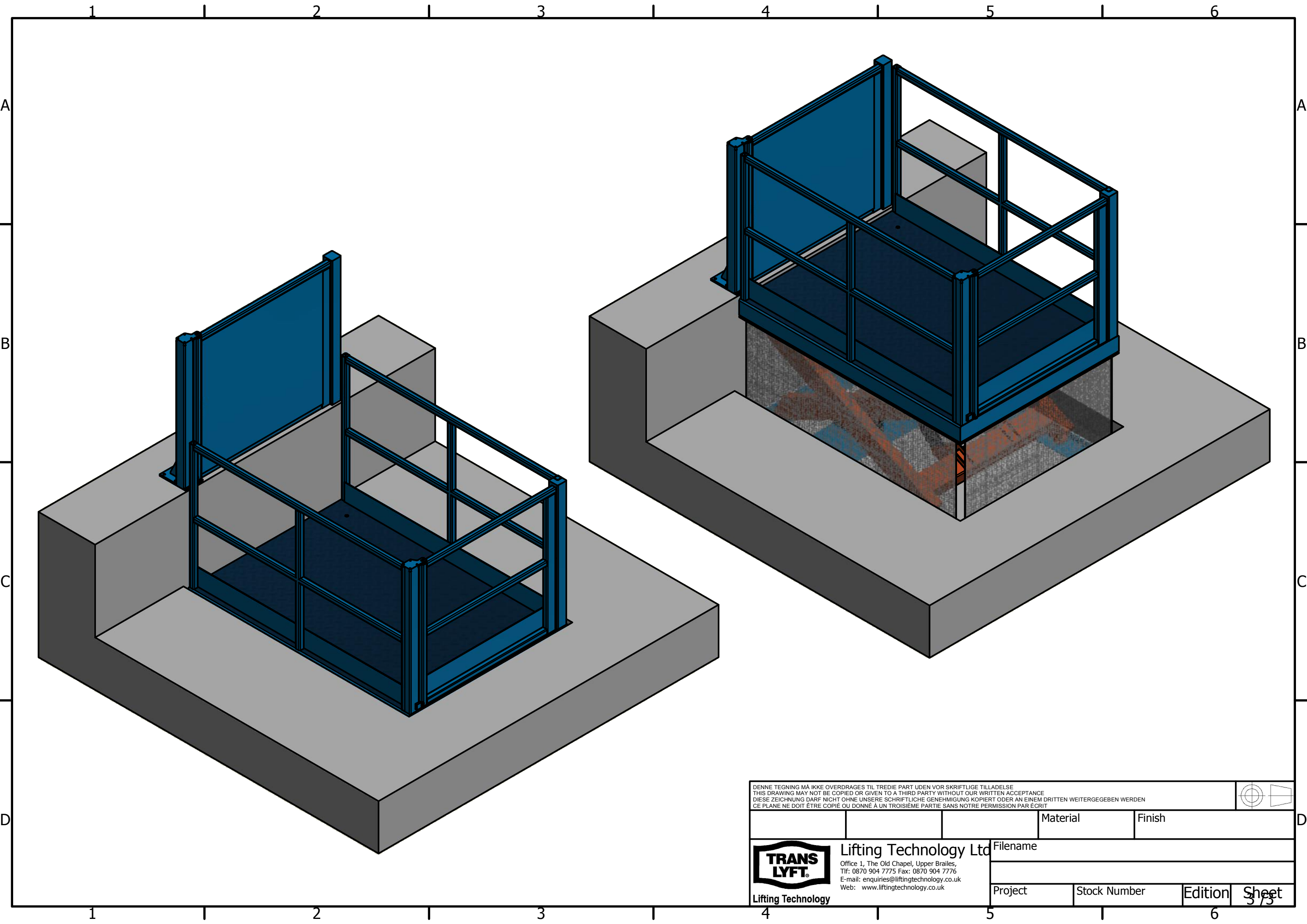


50x50 Chase in edge of pit wall required for cables to reach remote mounted gate

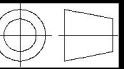
DENNE TEGNING MÅ IKKE OVERDRAGES TIL TREDJE PART UDEN VOR SKRIFTLIGE TILLAESE  
 THIS DRAWING MAY NOT BE COPIED OR GIVEN TO A THIRD PARTY WITHOUT OUR WRITTEN ACCEPTANCE  
 DIESE ZEICHNUNG DARF NICHT OHNE UNSERE SCHRIFTLICHE GENEHMIGUNG KOPIERT ODER AN EINEM DRITTEN WEITERGEGEBEN WERDEN  
 CE PLANE NE DOIT ÊTRE COPIÉ OU DONNÉ À UN TROISIÈME PARTIE SANS NOTRE PERMISSION PAR ÉCRIT


		Material	Finish
 <b>Lifting Technology Ltd</b> Office 1, The Old Chapel, Upper Brailes, Tlf: 0870 904 7775 Fax: 0870 904 7776 E-mail: enquiries@liftingtechnology.co.uk Web: www.liftingtechnology.co.uk		Filename	
Project	Stock Number	Edition	Sheet

2 / 3



DENNE TEGNING MÅ IKKE OVERDRAGES TIL TREDJE PART UDEN VOR SKRIFTLIGE TILLAEDELSE  
 THIS DRAWING MAY NOT BE COPIED OR GIVEN TO A THIRD PARTY WITHOUT OUR WRITTEN ACCEPTANCE  
 DIESE ZEICHNUNG DARF NICHT OHNE UNSERE SCHRIFTLICHE GENEHMIGUNG KOPIERT ODER AN EINEM DRITTEN WEITERGEGEBEN WERDEN  
 CE PLANE NE DOIT ÊTRE COPIÉ OU DONNÉ À UN TROISIÈME PARTIE SANS NOTRE PERMISSION PAR ÉCRIT



			Material	Finish
 <b>Lifting Technology Ltd</b> Office 1, The Old Chapel, Upper Brailes, Tlf: 0870 904 7775 Fax: 0870 904 7776 E-mail: enquiries@liftingtechnology.co.uk Web: www.liftingtechnology.co.uk		Filename		
Project	Stock Number	Edition	Sheet	