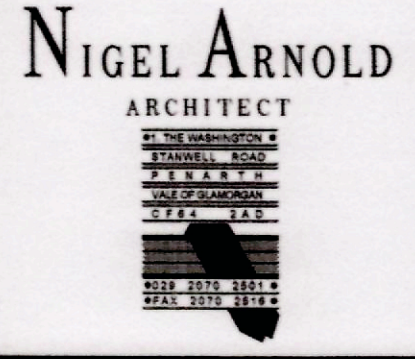
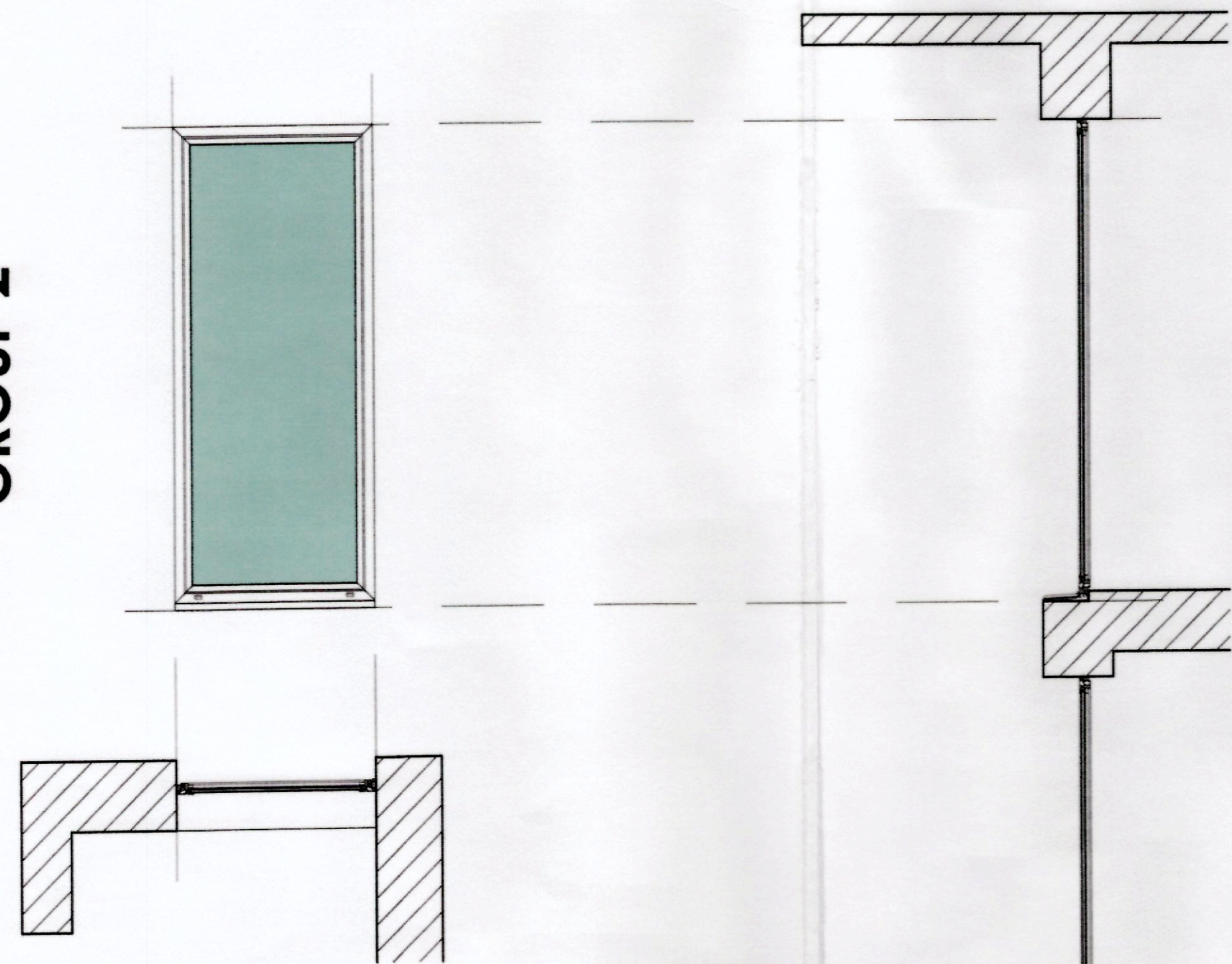


THE VALE OF  
GLAMORGAN COUNCIL  
TOWN AND COUNTRY PLANNING ACT 1990  
**APPROVED**  
SUBJECT TO COMPLIANCE WITH CONDITIONS (IF ANY)

PROJECT PROPOSED HOTEL AND CAFE BAR MARINE BUILDINGS, PENARTH		CLIENT SKYASSET LTD	
TITLE <b>PROPOSED WINDOWS AND DOORS</b>		 <b>NIGEL ARNOLD</b> ARCHITECT	
DRAWN NA	DATE 11/11	SCALE 1:100 / 20	DRWG No. 37311:27
<small>This drawing is copyright. Scaled dimensions may be used for approximation. Ensure only dimensions are used for construction.</small>			

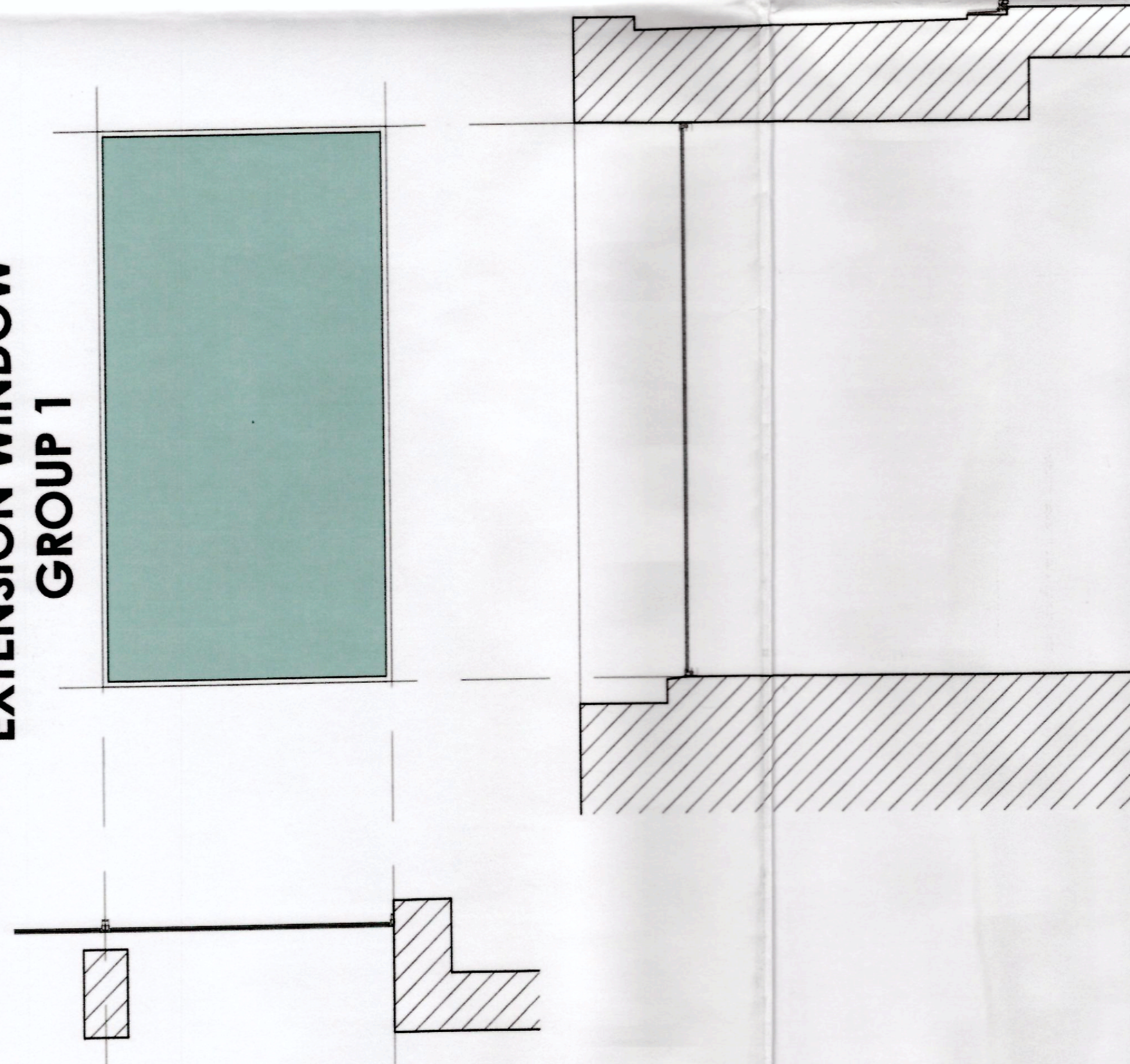
**EXTENSION WINDOW  
GROUP 2**



**EXTENSION WINDOW  
GROUP 3**



**EXTENSION WINDOW  
GROUP 1**



**EXTENSION WINDOW  
GROUP 4**



**EXTERNAL WINDOWS / SCREENS / DOORS**

- All in polyester powder coated aluminium with polyamide thermal break. Exposure category 2000Pa. Powder coating applied to a min 60 microns thick - colour RAL 7016 matt.
- Opening casements - top openings on stainless steel friction stay hinges. Opening casements fitted with lockable locking handles - colour to match aluminium.
- All windows to be fitted with operable trickle vents.
- All fitted with integral 150mm wide aluminium cills
- Frames to be fixed with stainless steel cramps fixed to masonry reveals, heads and cills
- All glazing - 28mm double glazed:  
1 x 4mm clear float, 1 x 4mm clear soft coated Low E, plus argon fill  
All glass toughened

THE VALE OF  
GLAMORGAN COUNCIL  
(PLANNING DIVISION)  
**RE-REGISTERED**  
HEAD OF PLANNING AND TRANSPORTATION

RECEIVED  
22 NOV 2011  
ENVIRONMENTAL AND ECONOMIC DEVELOPMENT

1101177FUL  
VALE OF GLAMORGAN COUNCIL  
(PLANNING DIVISION)  
22 NOV 2011

